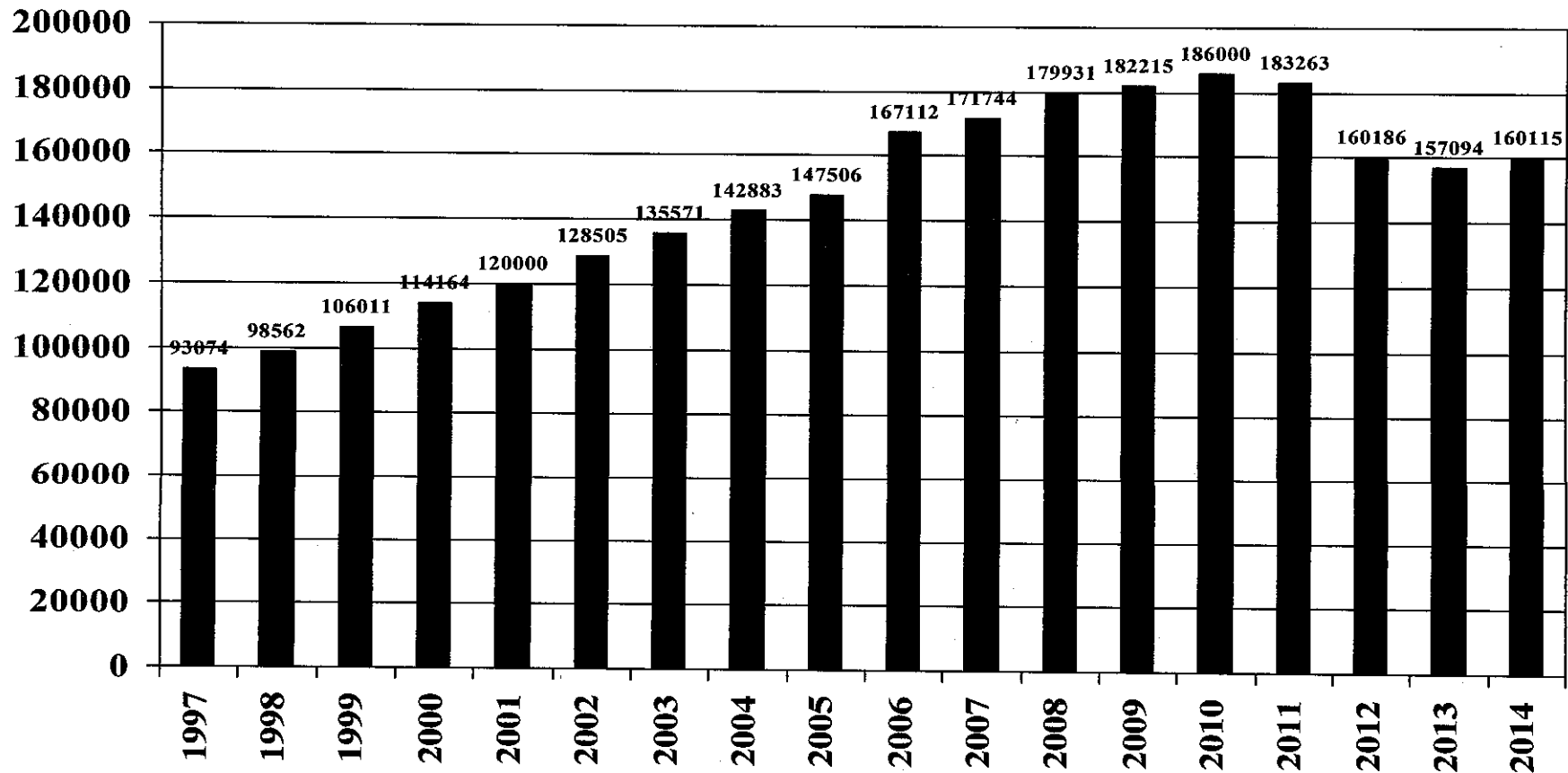


# By the NUMBERS

## Registration

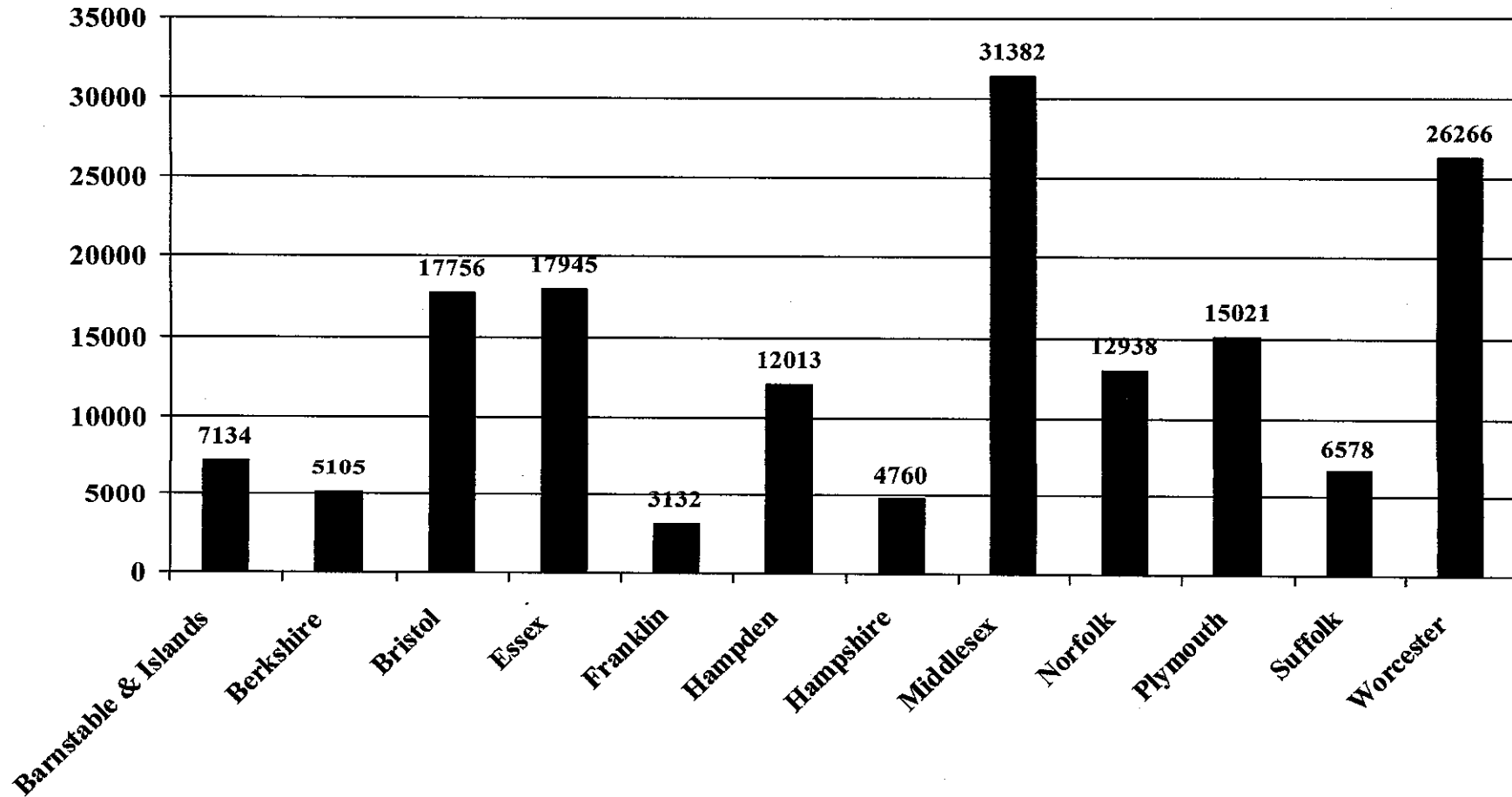


16% reduction in Registrations since 2010 to 2013. 2% increase in 2014



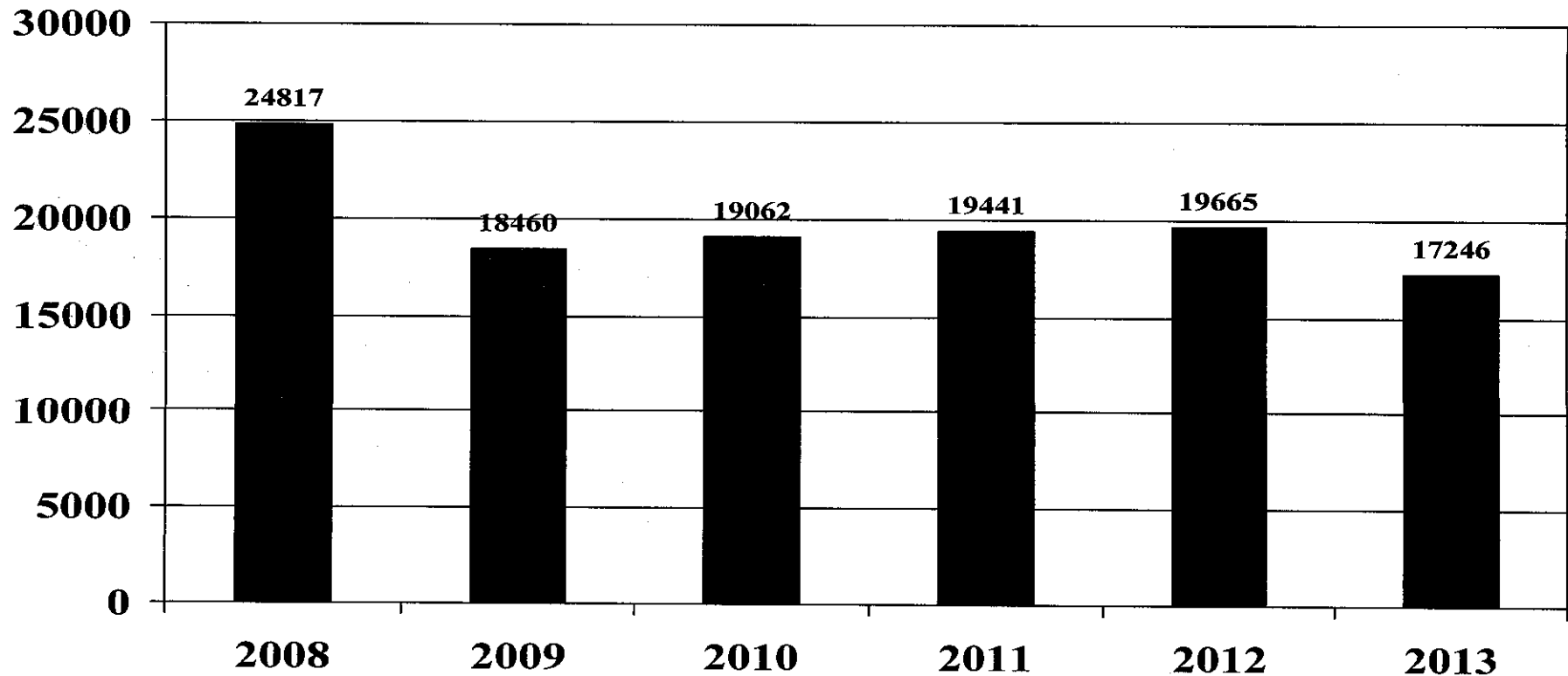
# By the NUMBERS

## Registration by County



# By the NUMBERS

## Motorcycle Permits



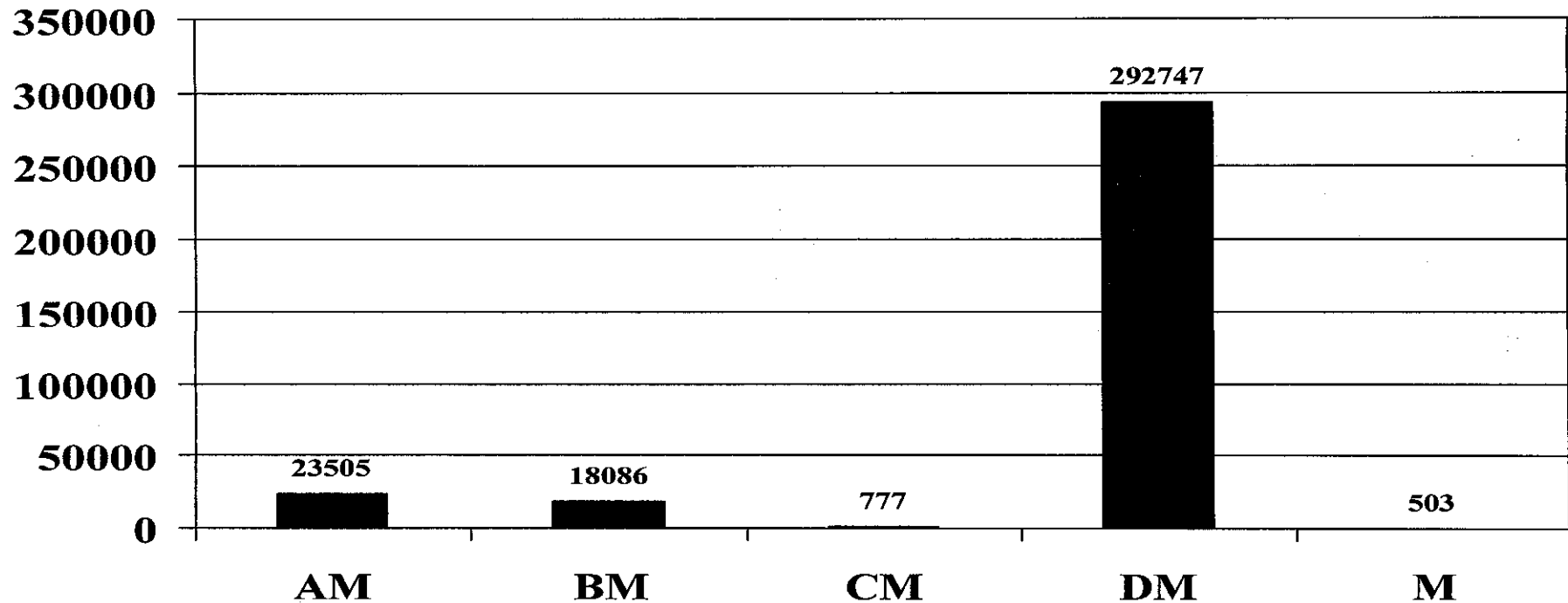
31% reduction in MC Permits since 2008

3

# By the NUMBERS

## Motorcycle License

■ MC License

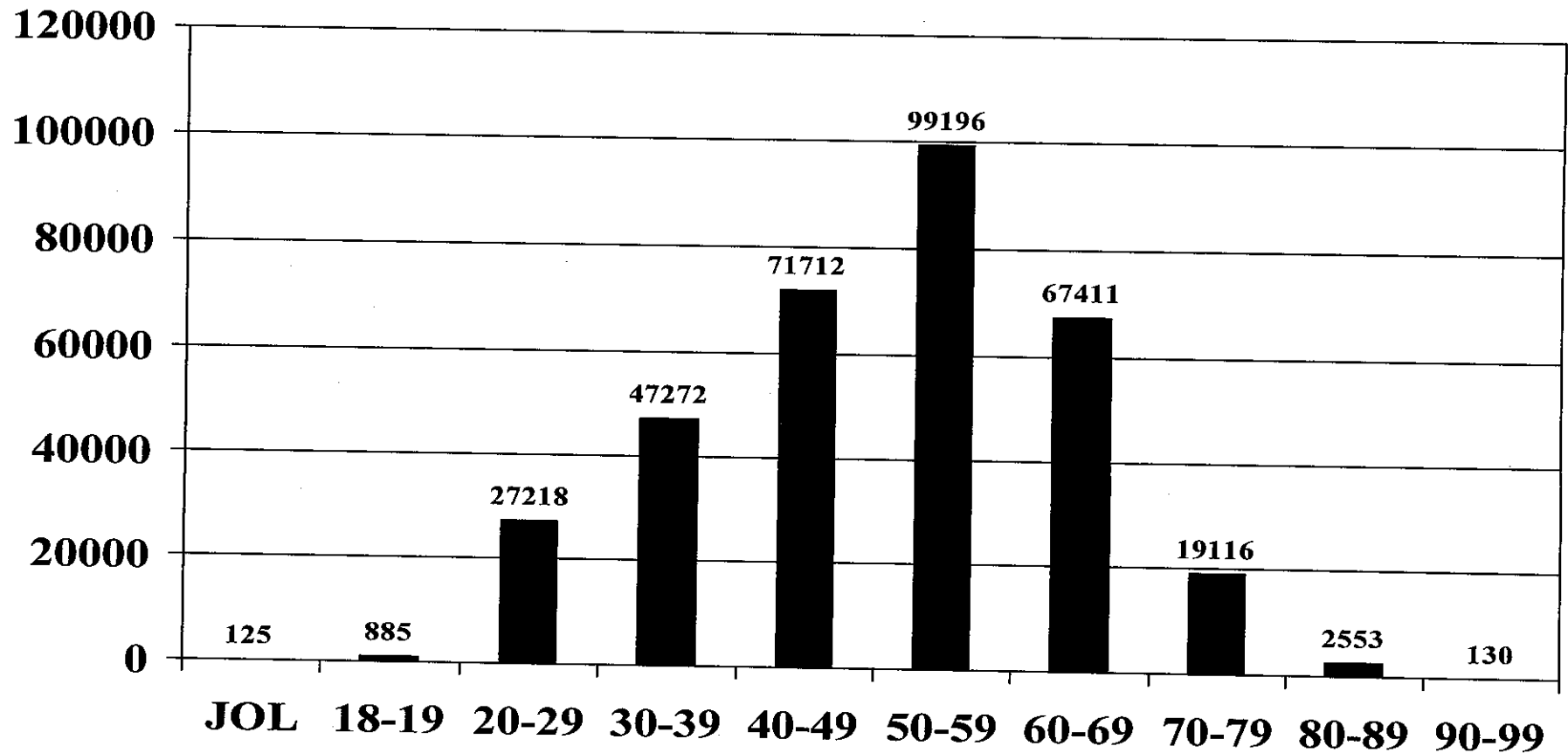


DM accounts for 87% of all MC Licenses

9

# By the NUMBERS

## Motorcycle License

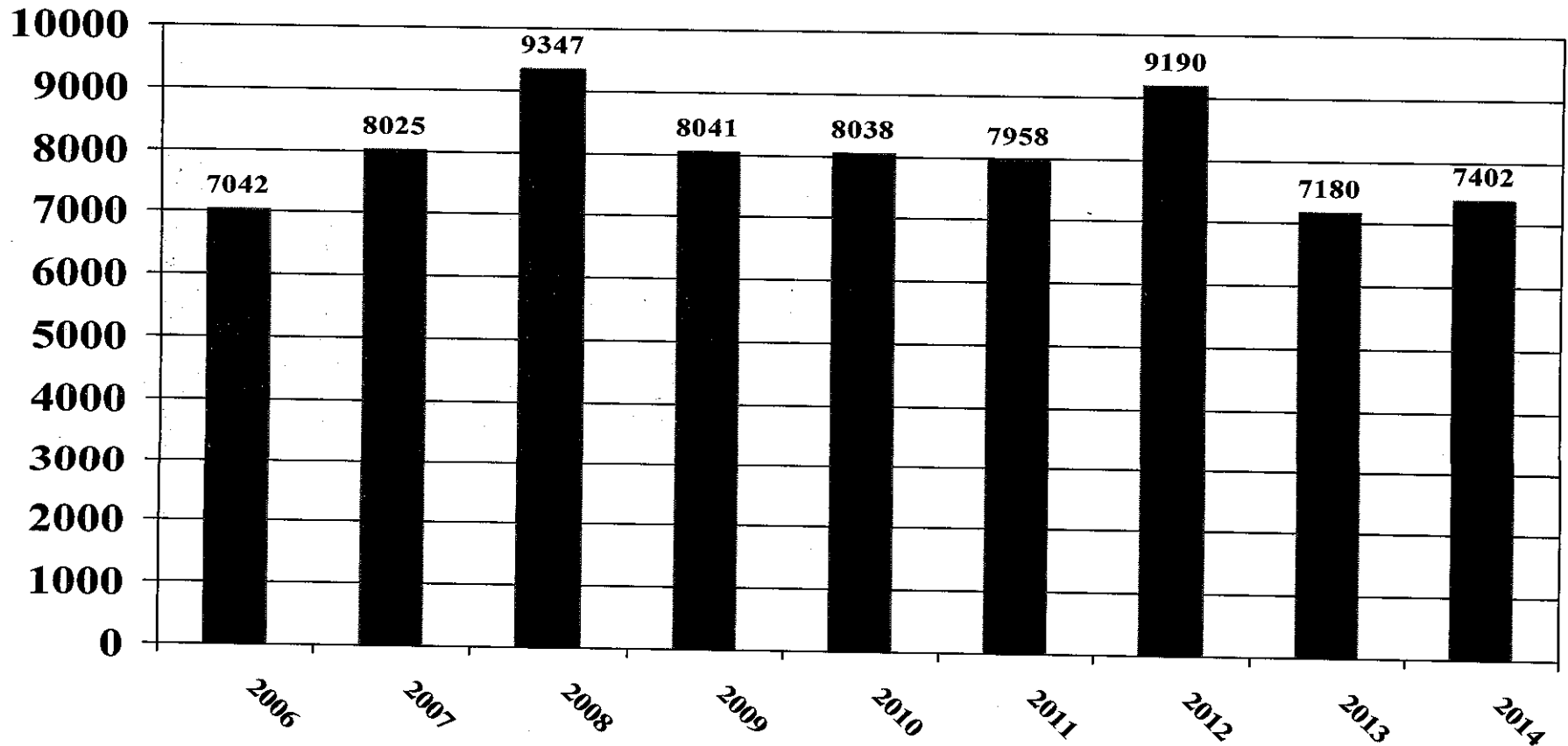


50-59 Year Olds account for 30% of all MC Licenses



# By the NUMBERS

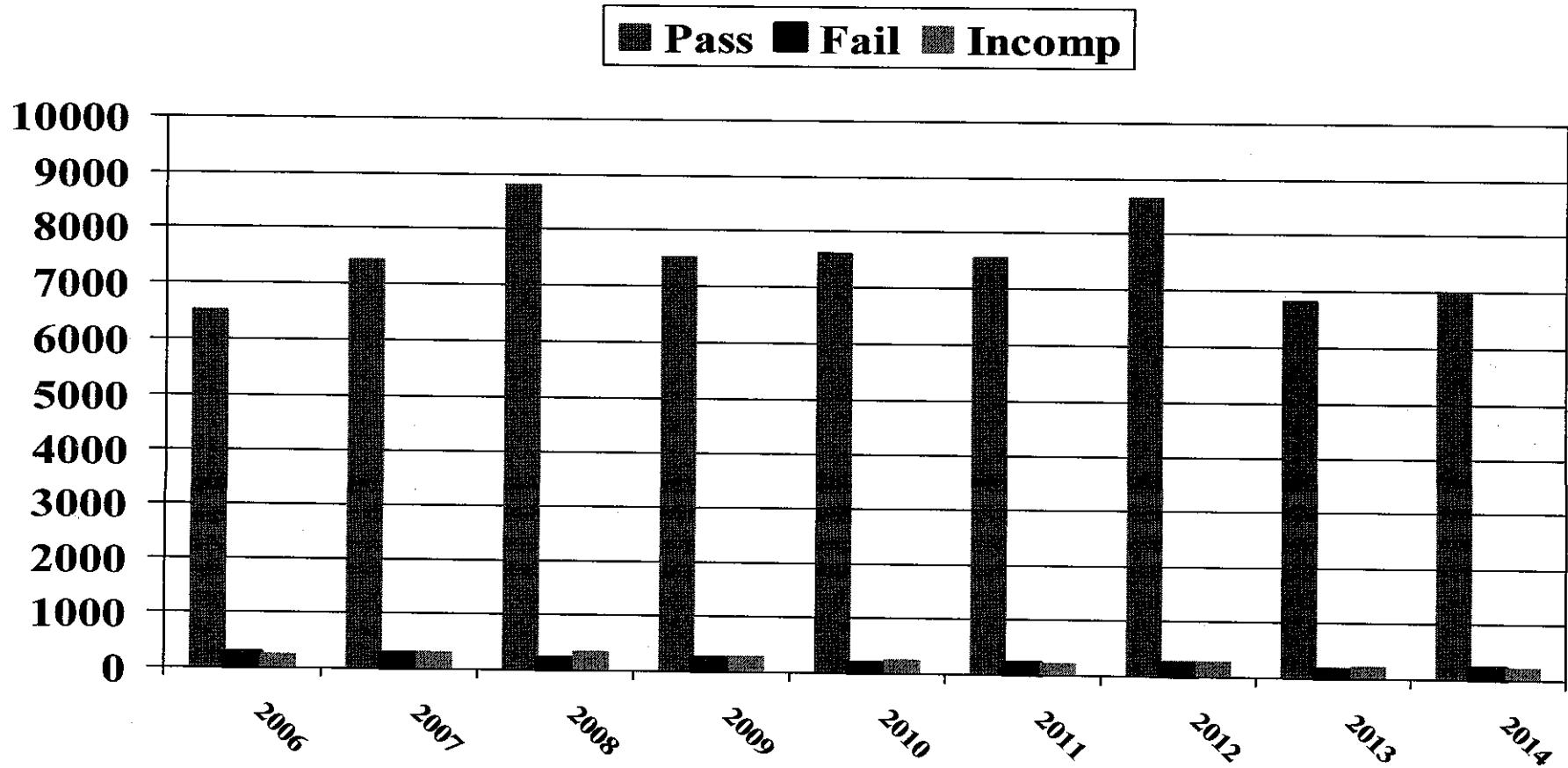
## Basic Rider Course



6

# By the NUMBERS

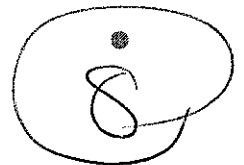
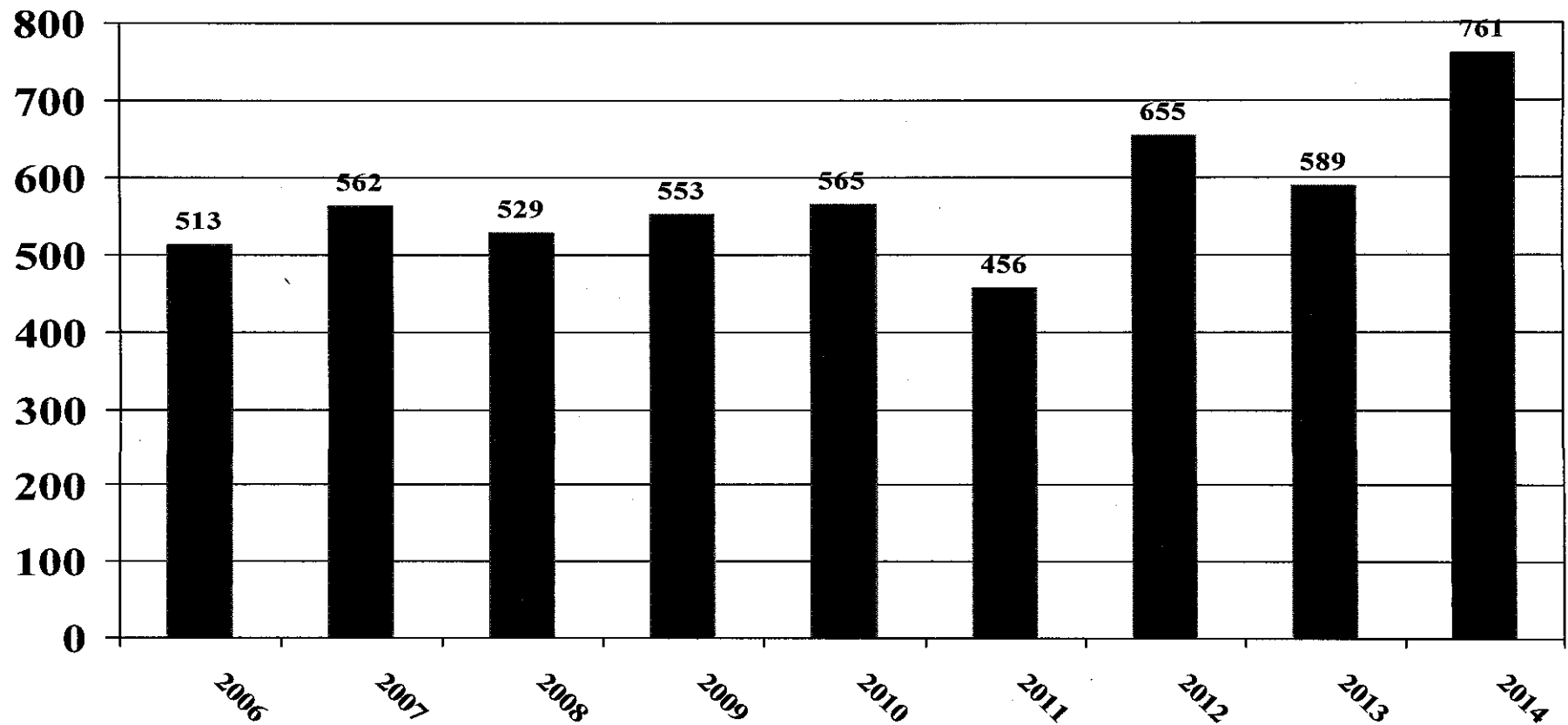
## Basic Rider Course (Pass, Fail, Incomp)



7

# By the NUMBERS

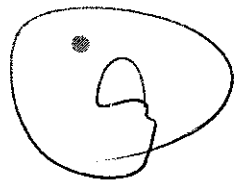
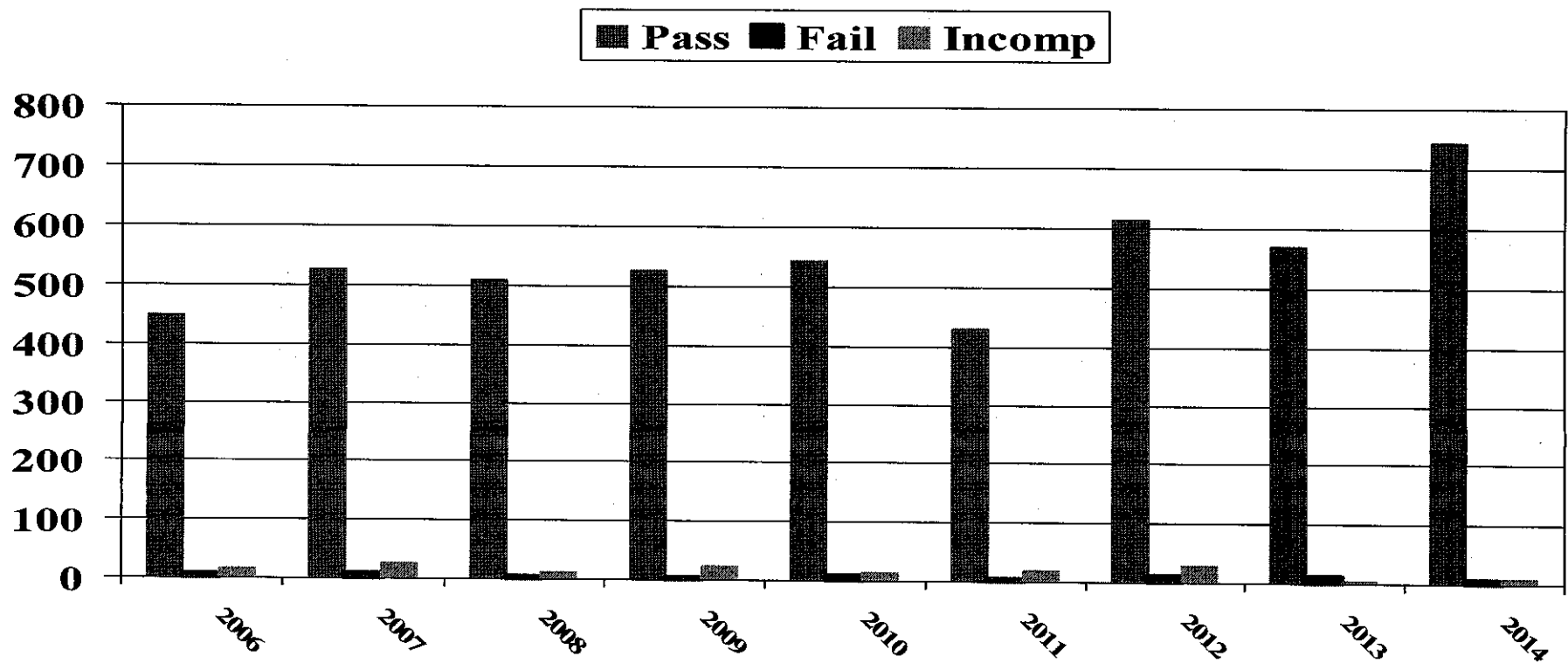
## Experience Rider Course





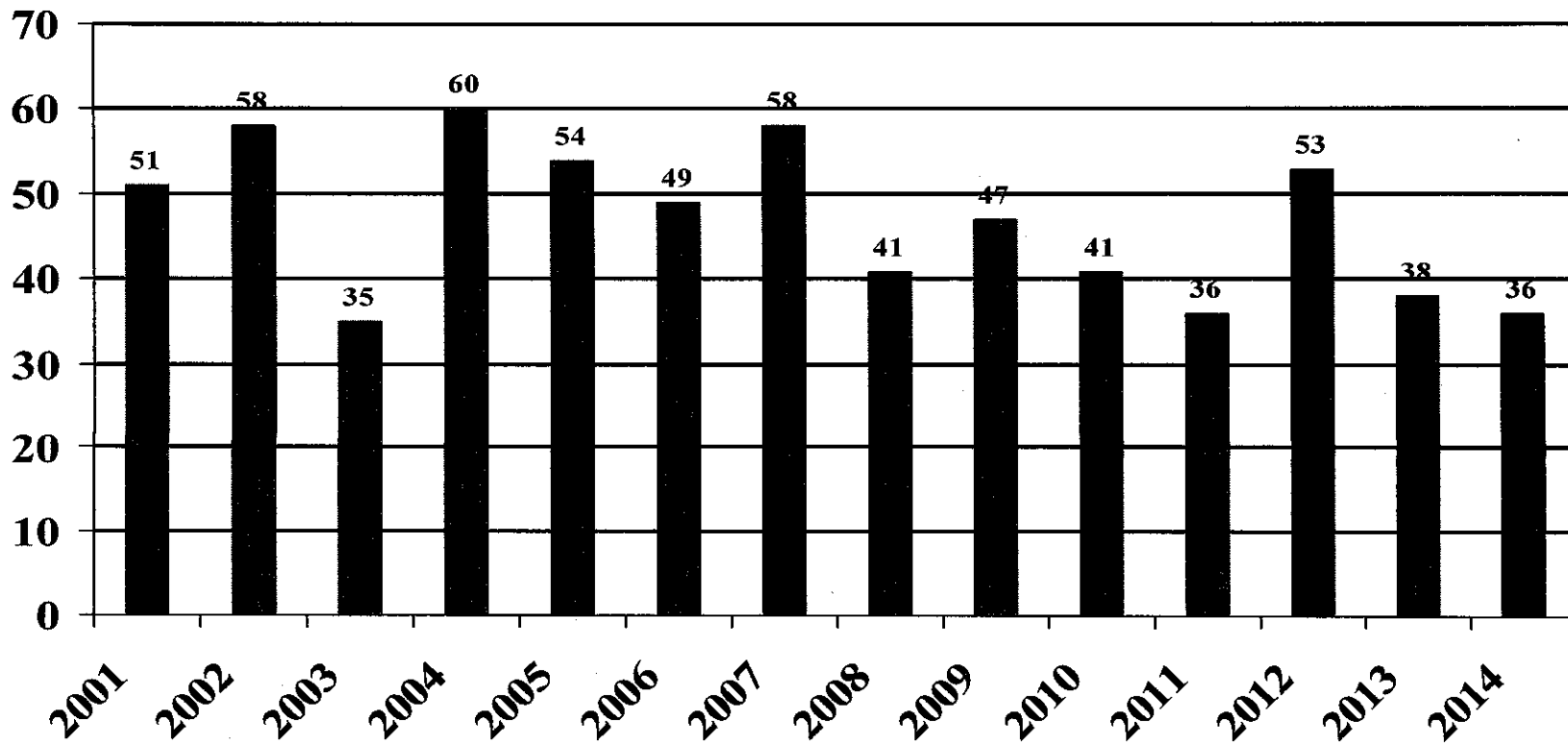
# By the NUMBERS

## Experience Rider Course (Pass, Fail, Incomp)



# By the NUMBERS

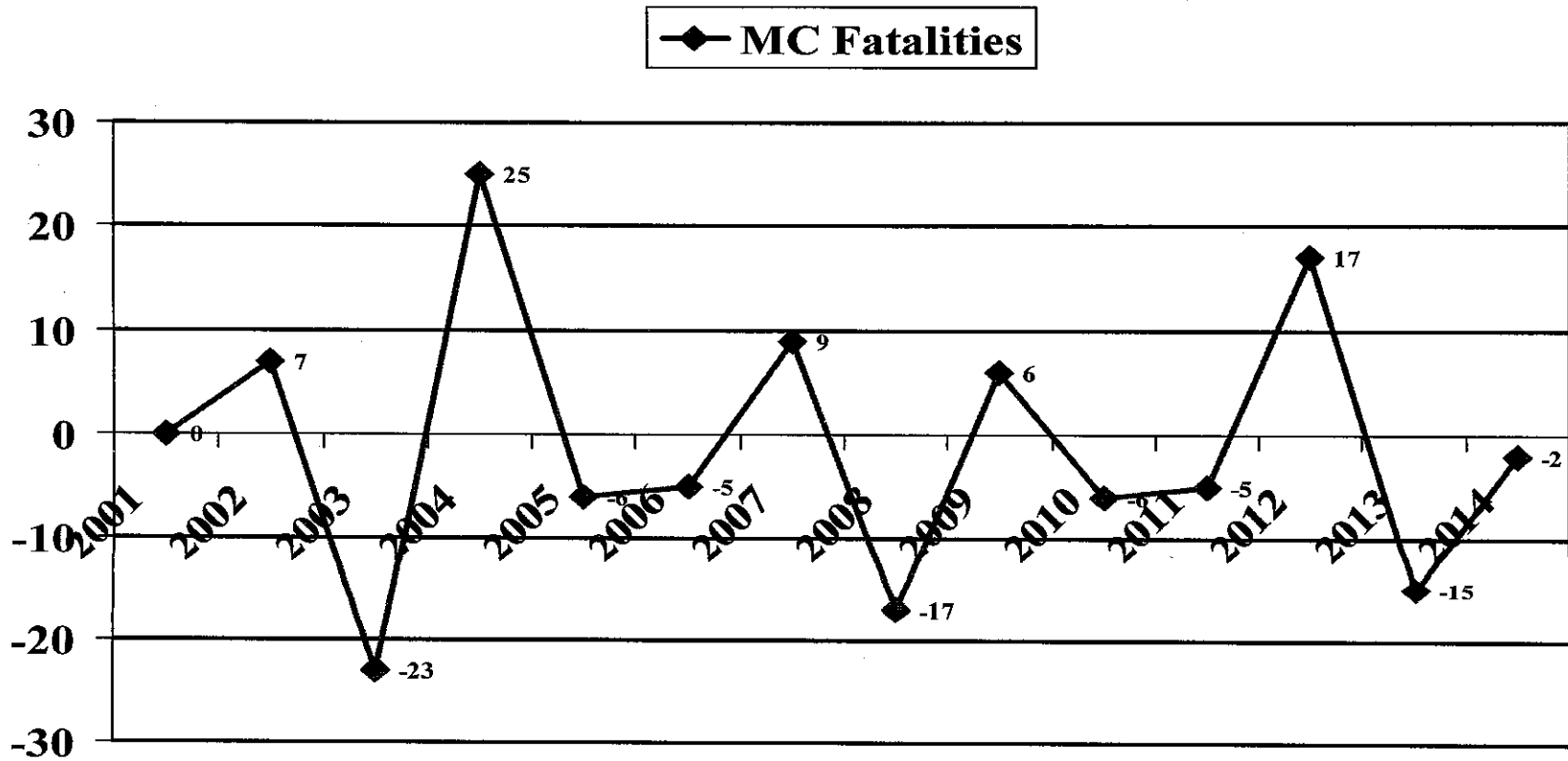
## Motorcycle Fatalities



103

# By the NUMBERS

## Motorcycle Fatalities (+ / - each Year)

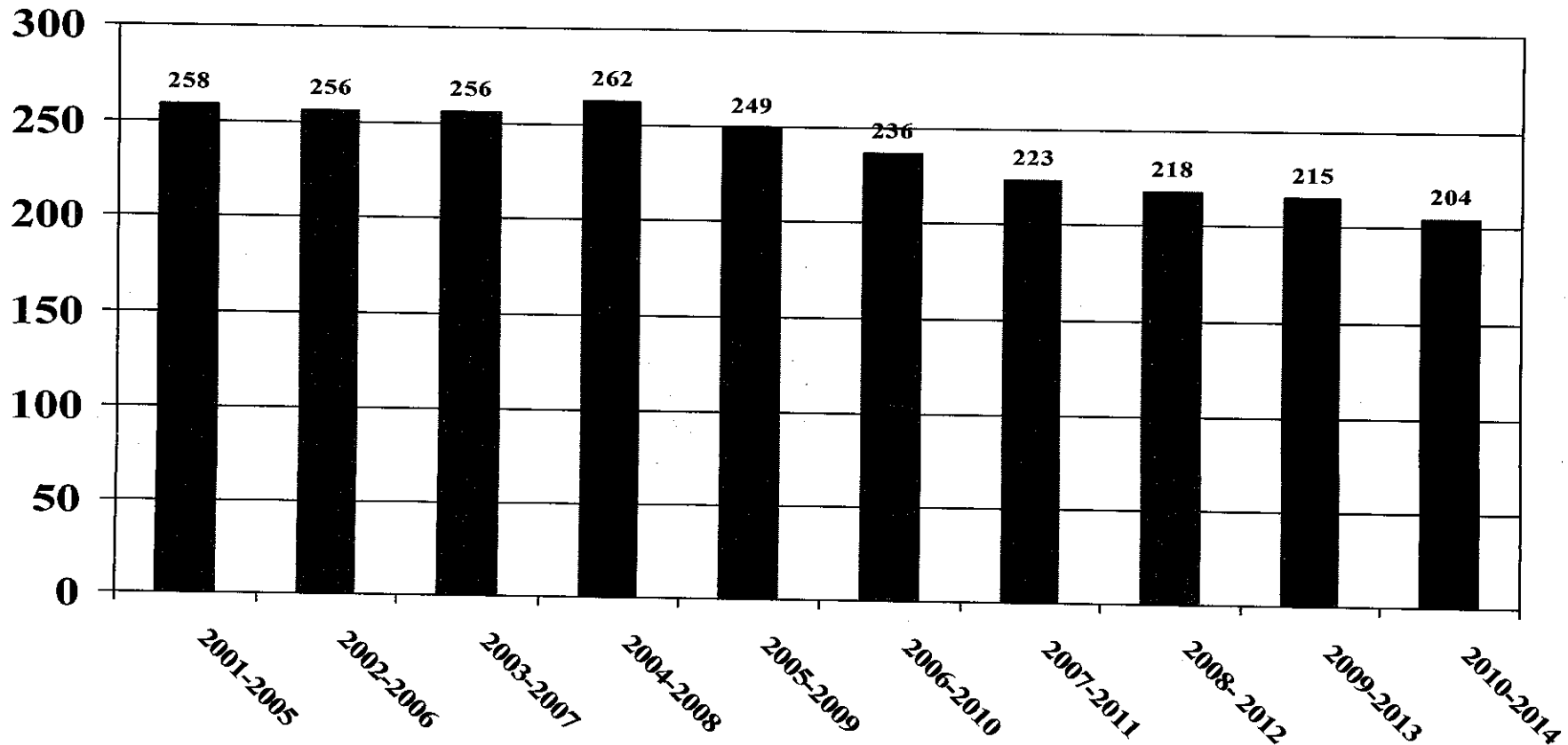


Over 14 years there are a lot of Ups and Downs on a yearly basis



# By the NUMBERS

## Motorcycle Fatalities (5 Year Increments)

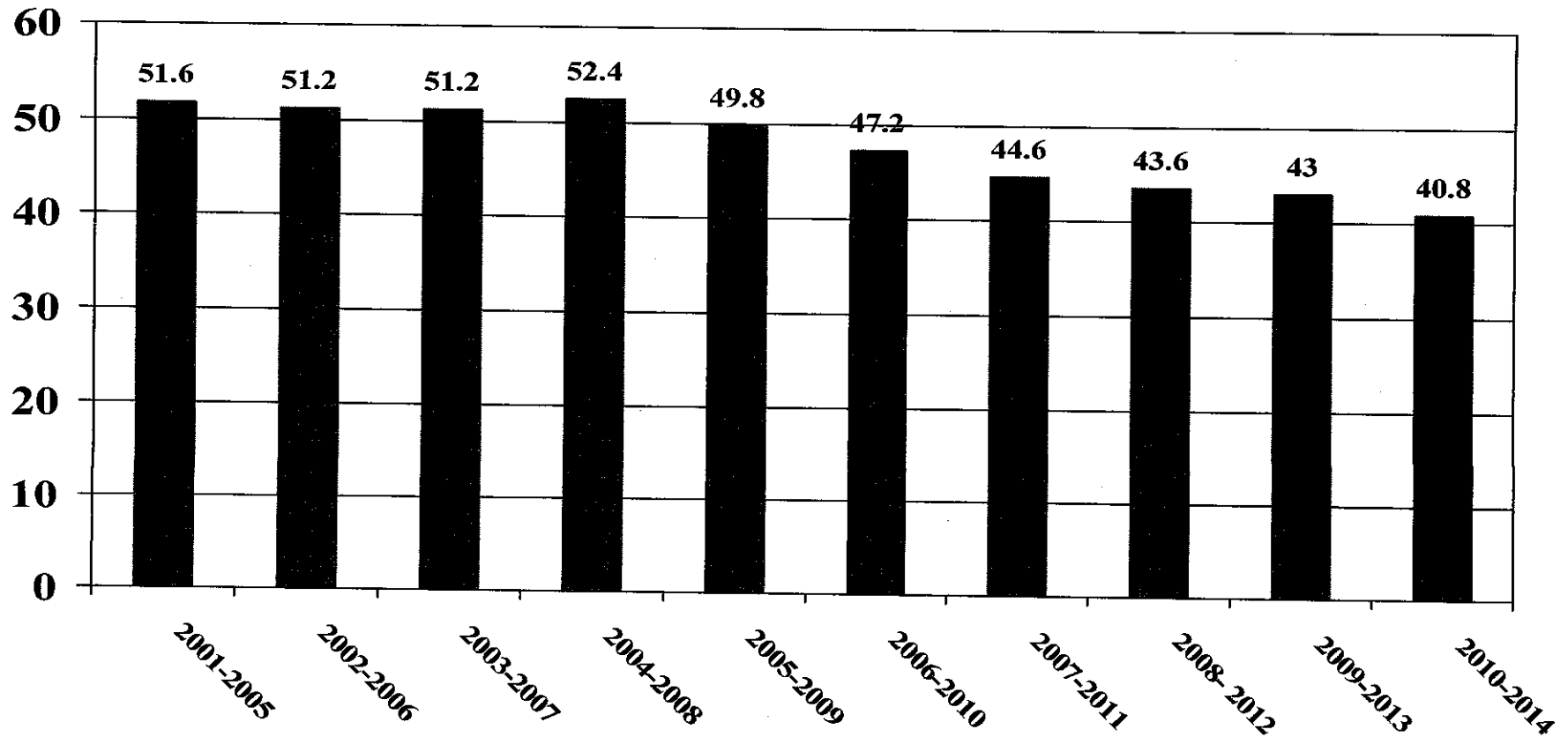


22% reduction in 5 Yr Avg fatalities rate between 2004-2008 & 2010-2014

12

# By the NUMBERS

## Motorcycle Fatalities (5 Year Average)

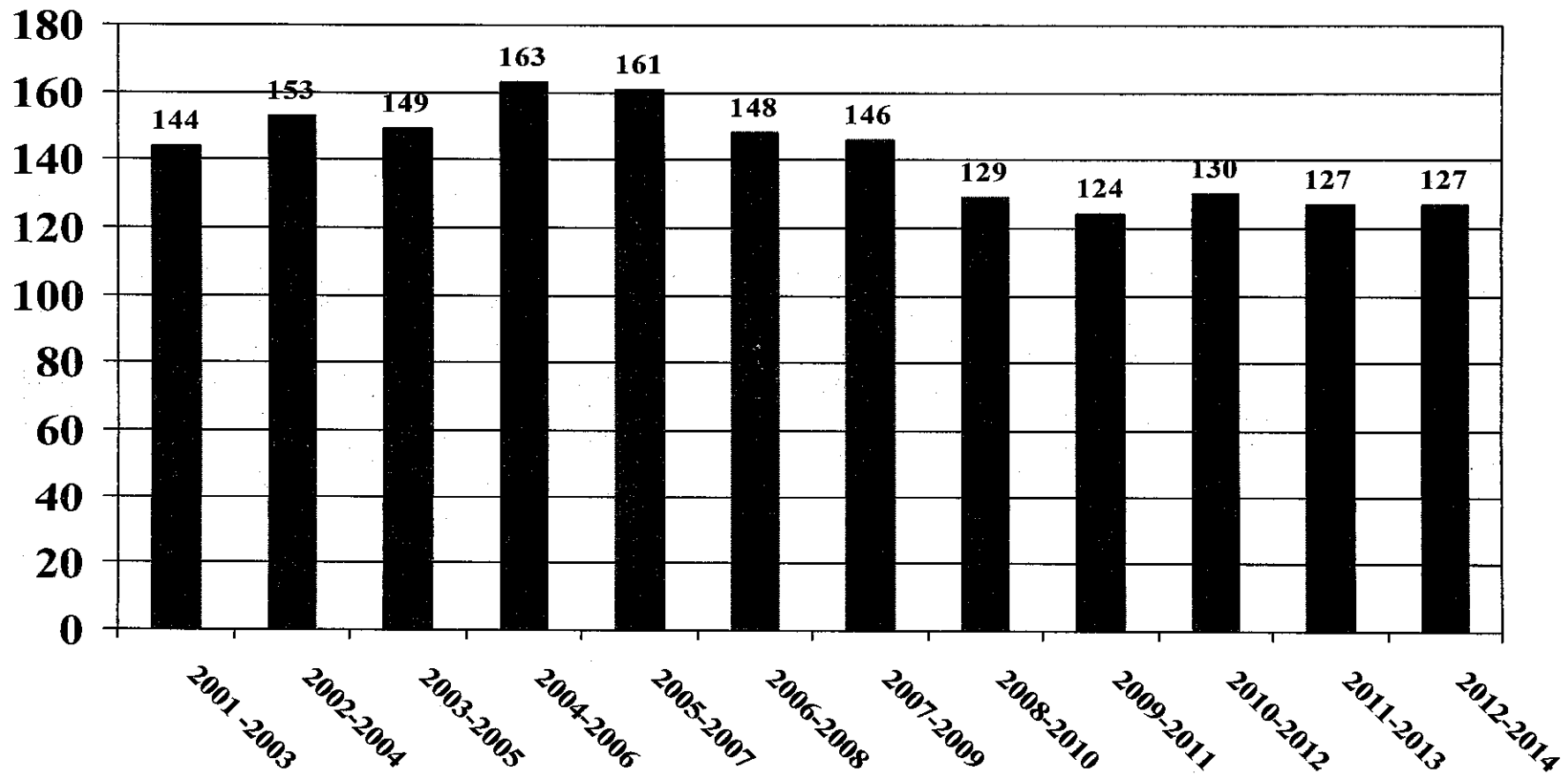


22% reduction in 5 Yr Avg fatalities rate between 2004-2008 & 2010-2014

13

# By the NUMBERS

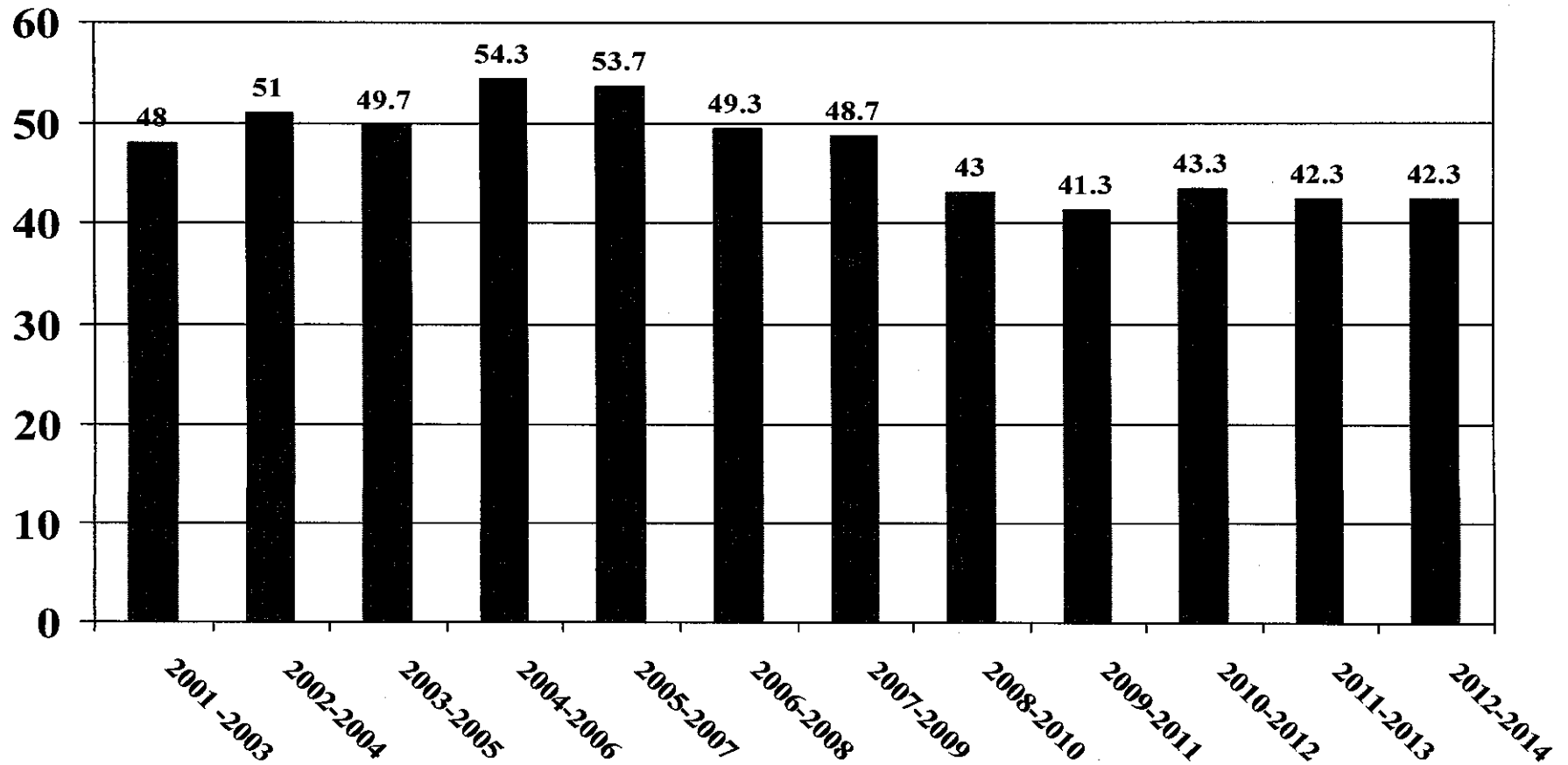
## Motorcycle Fatalities (3 Year Increments)



M

# By the NUMBERS

## Motorcycle Fatalities (3 Year Averages)



15